



Features

- ABS compatible
- Spherical bearing mount with one-piece pushrod/piston eliminates side thrust loads on bore to provide long service life and consistent braking
- Billet aluminum body with low-friction coating
- Hand-built and blueprinted for cutoff port travel
- 1.1" stroke
- AN3 outlet port
- AN4 o-ring seal inlet port swivel fitting (sold separately)
- Fits Tilton [800-Series](#) and [900-Series](#) pedal assemblies/balance bars



Features

- Spherical bearing mount with one-piece pushrod/piston eliminates side thrust loads on bore to provide long service life and consistent braking
- Billet aluminum body with low-friction coating
- Hand-built and blueprinted for cutoff port travel
- 1.1" stroke
- AN3 outlet port
- 9/16"-18 inlet port
- Fits Tilton [800-Series](#) and [900-Series](#) pedal assemblies/balance bars

79-Series Master Cylinder

Spherical bearing-mount master cylinder specifically designed for use with ABS systems. Unlike traditional master cylinders, 79-Series master cylinders do not utilize a conventional cut-off port, and instead, feature a unique port strategy with a mechanically opened cut-off/compensation path. This design greatly reduces the chance of seal damage caused by high pressure pulsations sent back to the master cylinder by the ABS system.

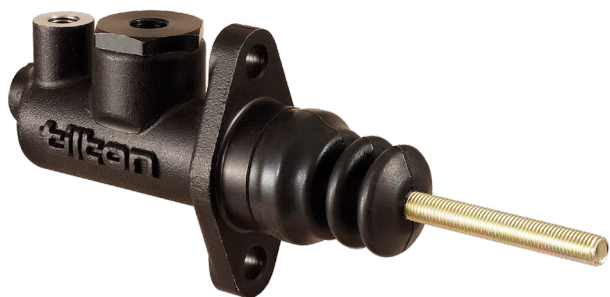
Description	Part Number
79-Series master cylinder, 5/8" (15.88mm) bore	79-625
79-Series master cylinder, 7/10" (17.78mm) bore	79-700
79-Series master cylinder, 3/4" (19.05mm) bore	79-750
79-Series master cylinder, 13/16" (20.64mm) bore	79-812
79-Series master cylinder, 7/8" (22.23mm) bore	79-875
Inlet adapter, swivel type AN4 male end	79-523

78-Series Master Cylinder

Lightweight and compact spherical bearing-mount master cylinder. Direct replacement to Tilton 77-Series master cylinders

Description	Part Number
78-Series master cylinder, 5/8" (15.88mm) bore	78-625
78-Series master cylinder, 7/10" (17.78mm) bore	78-700
78-Series master cylinder, 3/4" (19.05mm) bore	78-750
78-Series master cylinder, 13/16" (20.64mm) bore	78-812
78-Series master cylinder, 7/8" (22.23mm) bore	78-875
78-Series master cylinder, 15/16" (23.81mm) bore	78-937
78-Series master cylinder, 1" (25.40mm) bore	78-1000
Inlet adapter, straight, 9/16"-18 to AN4 male	77-015
Inlet adapter, banjo type, 9/16"-18 to AN4 male	78-3400





76-Series Master Cylinder

Compact flange-mount master cylinder features dual outlet port options and a 7/16"-20 inlet port. Inlet port adapter can be removed to fit Tilton direct-mount reservoir (P/N 74-240)

Features

- Flange-mount onto pedal assemblies with 2.25" center-to-center mounting studs
- Aluminum alloy body is black anodized for corrosion resistance
- 1.1" stroke
- Dual AN3 outlet port options (rear & top). Top outlet port is deep for use with most banjo fittings. Rear outlet port is standard depth AN3 spec.
- 7/16"-20 inlet port
- Fits Tilton [600-Series](#) and [800-Series](#) (clutch only) pedal assemblies/balance bars

Description	Part Number
76-Series master cylinder, 5/8" (15.88mm) bore	76-625
76-Series master cylinder, 7/10" (17.78mm) bore	76-700
76-Series master cylinder, 3/4" (19.05mm) bore	76-750
76-Series master cylinder, 13/16" (20.64mm) bore	76-812
76-Series master cylinder, 7/8" (22.23mm) bore	76-875
76-Series master cylinder, 1" (25.40mm) bore	76-1000
Direct mount reservoir, 5.3 oz (158ml)	74-240



75-Series Master Cylinder

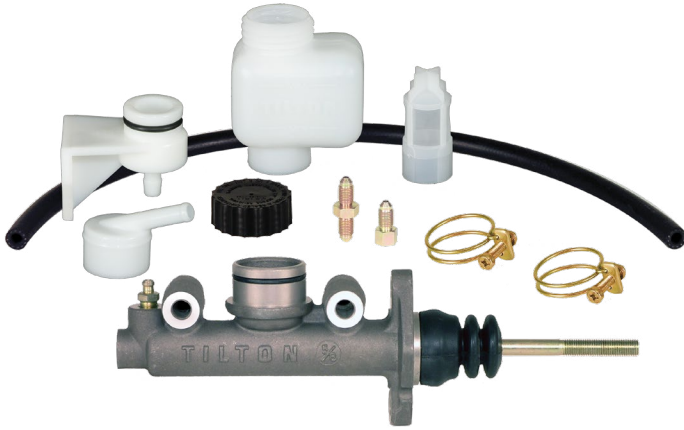
Compact flange-mount universal master cylinder kit. Universal kit includes 6.8 oz reservoir, remote mount reservoir components and fittings.

Features

- Flange-mount onto pedal assemblies with 2.25" center-to-center mounting studs
- Aluminum alloy body is black anodized for corrosion resistance
- 1.1" stroke
- AN3 outlet port
- Direct mount or remote-mount reservoir options
- Fits Tilton [600-Series](#) and [800-Series](#) (clutch only) pedal assemblies/balance bars

Description	Universal Master Cylinder Kit	Master Cylinder Only
75-Series master cylinder, 5/8" (15.88mm) bore	75-625U	75-625
75-Series master cylinder, 7/10" (17.78mm) bore	75-700U	75-700
75-Series master cylinder, 3/4" (19.05mm) bore	75-750U	75-750
75-Series master cylinder, 13/16" (20.64mm) bore	75-812U	75-812
75-Series master cylinder, 7/8" (22.23mm) bore	75-875U	75-875
75-Series master cylinder, 1" (25.40mm) bore	75-1000U	75-1000

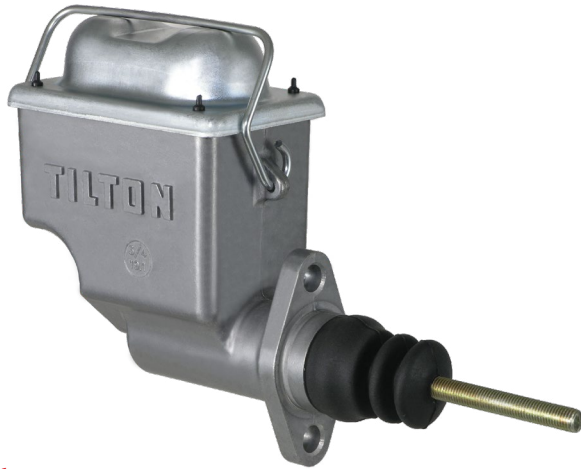




Features

- Flange-mount onto pedal assemblies with 2.25" center-to-center mounting studs
- 3.00" center-to-center side mount option
- Aluminum alloy body is clear anodized for corrosion resistance
- 1.1" stroke
- Dual AN3 outlet port options. Includes bleed screw installed into top port.
- Direct mount or remote-mount reservoir options
- Fits Tilton 600-Series pedal assemblies/balance bars

Description	Universal Master Cylinder Kit	Master Cylinder Only
74-Series master cylinder, 5/8" (15.88mm) bore	74-625U	74-625
74-Series master cylinder, 7/10" (17.78mm) bore	74-700U	74-700
74-Series master cylinder, 3/4" (19.05mm) bore	74-750U	74-750
74-Series master cylinder, 13/16" (20.64mm) bore	74-812U	74-812
74-Series master cylinder, 7/8" (22.23mm) bore	74-875U	74-875
74-Series master cylinder, 1" (25.40mm) bore	74-1000U	74-1000
74-Series master cylinder, 1 1/8" (28.58mm) bore	74-1125U	74-1125



Features

- Flange-mount onto pedal assemblies with 2.25" center-to-center mounting studs
- High pressure die-cast aluminum alloy body provides machined-look finish
- Integral 10 oz reservoir feature an expanding bellow to keep elements away from brake fluid
- 1.1" stroke
- 1/8" NPT outlet port
- Fits Tilton 600-Series pedal assemblies/balance bars

74-Series Master Cylinder

Continuously improved since their introduction in 1986, the venerable 74-Series universal master cylinder kits have become a trusted favorite of car builders and race teams due to their reliability and value. Universal kit includes 6.8 oz reservoir, remote mount reservoir components and fittings.

73-Series Master Cylinder

Designed for applications that require large fluid capacity in a leak-proof integral reservoir. 10 oz fluid chamber is completely sealed from the outside environment while still allowing fluid level changes.

Description	Part Number
73-Series master cylinder, 3/4" (19.05mm) bore	73-750
73-Series master cylinder, 7/8" (22.23mm) bore	73-875
73-Series master cylinder, 1" (25.40mm) bore	73-1000





Master Cylinder Rebuild Kits

Includes master cylinder internals and dust boot

Bore Size	74-Series	75-Series	76-Series	78-Series	79-Series
5/8" (15.88mm)	74-625RK	75-625RK	76-625RK	78-625RK	79-625RK
7/10" (17.78mm)	74-700RK	75-700RK	76-700RK	78-700RK	79-700RK
3/4" (19.05mm)	74-750RK	75-750RK	76-750RK	78-750RK	79-750RK
13/16" (20.64mm)	74-812RK	75-812RK	76-812RK	78-812RK	79-812RK
7/8" (22.23mm0)	74-875RK	75-875RK	76-875RK	78-875RK	79-875RK
15/16" (23.81mm)	N/A	N/A	N/A	78-937RK	N/A
1" (25.40mm)	74-1000RK	75-1000RK	76-1000RK	78-1000RK	N/A
1 1/8" (28.58mm)	74-1125RK	75-1125RK	N/A	N/A	N/A



Master Cylinder Service Parts

Description	Label	74-Series	75-Series	76-Series
Reservoir, 4.0 oz	A	74-202	74-202	N/A
Reservoir, 6.8 oz	B	74-203	74-203	N/A
Reservoir, 10.7 oz	C	74-204	74-204	N/A
Filter, 4.0 and 6.8 oz reservoirs	D	74-210	74-210	N/A
Filter, 10.7 oz reservoirs	E	74-211	74-211	N/A
Cap, reservoir	F	74-207	74-207	N/A
Clamp, reservoir	G	74-208	74-208	N/A
O-ring, master cylinder/reservoir	N/A	74-212-B	74-212-A	N/A
Pushrod	N/A	74-400	75-030	75-030
Remote reservoir mount bracket with o-ring	H	74-212	74-212	N/A
Remote inlet adapter	I	74-200	74-200	N/A
O-ring, remote mount bracket	N/A	74-212-A	74-212-A	N/A
Hose kit, 96", incl. 6 clamps	N/A	74-221	74-221	N/A
Hose 24"	J	74-214	74-214	N/A
Hose, bulk, sold by the foot	N/A	72-502	72-502	N/A
Fitting, union, AN3 male/male	K	73-820	73-820	73-820
Fitting, AN3 male to 3/16" female	L	TE2089-188L	TE2089-188L	N/A
Bleedscrew, AN3	N/A	28696	N/A	N/A

